

**Congratulations to your purchase of  
The Bonfire Gas Torch Flame Heater, the #1 Patio &  
Deck Heater to extend your outdoor entertainment  
season!**

**Assembly Manual: Review Page 2 FIRST!**



1. The base and side poles legs
2. Attach the upper side poles
3. Get the middle platform ready
4. Mount the middle platform
5. Mount the top frame
6. Attach the wheels (optional)
7. Attach the side panels
8. Attach the side wire grills
9. Mount the burner
10. Mount the glass tube
11. Add the front panel
12. Mount the reflector hood
13. Propane unit: install the regulator
14. Test your unit



# KEY POINTS BEFORE YOU GET STARTED OPERATING *The Bonfire* Gas Torch Flame Heater:

## HIGH IMPORTANCE:



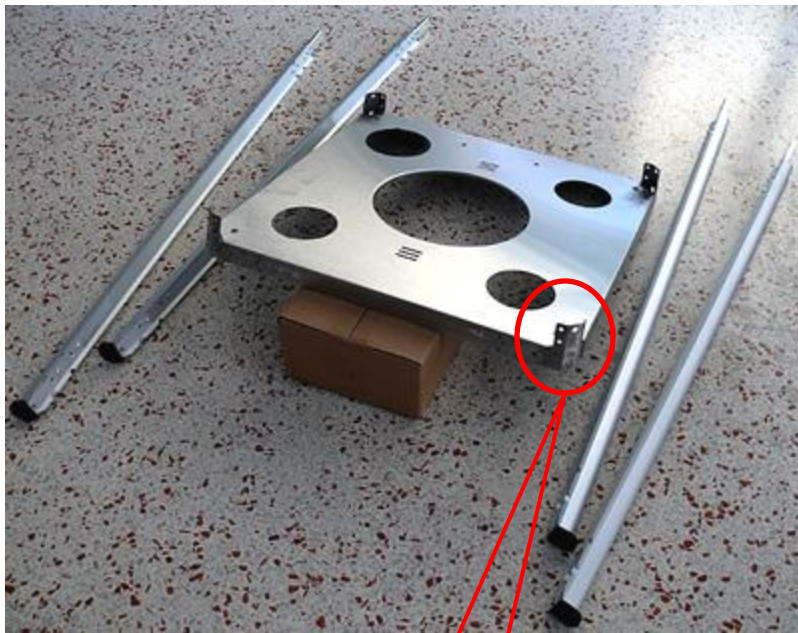
When connecting the gas hose to the burner, make sure to use **plumbing tape** (teflon tape) to secure that the connection is 100% air-tight.



Conduct a **thorough leak-test** before you start operating the unit: use a liquid soap solution around the hose to burner connection with the gas tank / gas valve opened. If you see small bubbles developing then there is a leak! Use more plumbing tape and tighten the connection. Repeat the leak-test.



# The Bonfire



## 1. The base and side pole legs:

- ❑ Unpack the base platform from the largest square box. Be careful as there is also the aluminum reflector packed with the base.
- ❑ Unpack the side leg poles from the long carton box where the glass tube is inside as well. Be very careful with this box and do not drop it.
- ❑ Fix each leg to the base using two screws (see arrows).
- ❑ Result: Base with attached 4 legs.



## 2. Attach the upper side poles

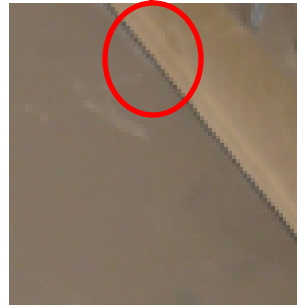
- ❑ Unpack the upper side poles from the long carton box where the glass tube is inside as well. Be very careful with this box and do not drop it.
- ❑ Connect the upper side pole to the lower leg poles using 2 screws per pole.
- ❑ Result: Base with attached 4 side poles & legs attached.





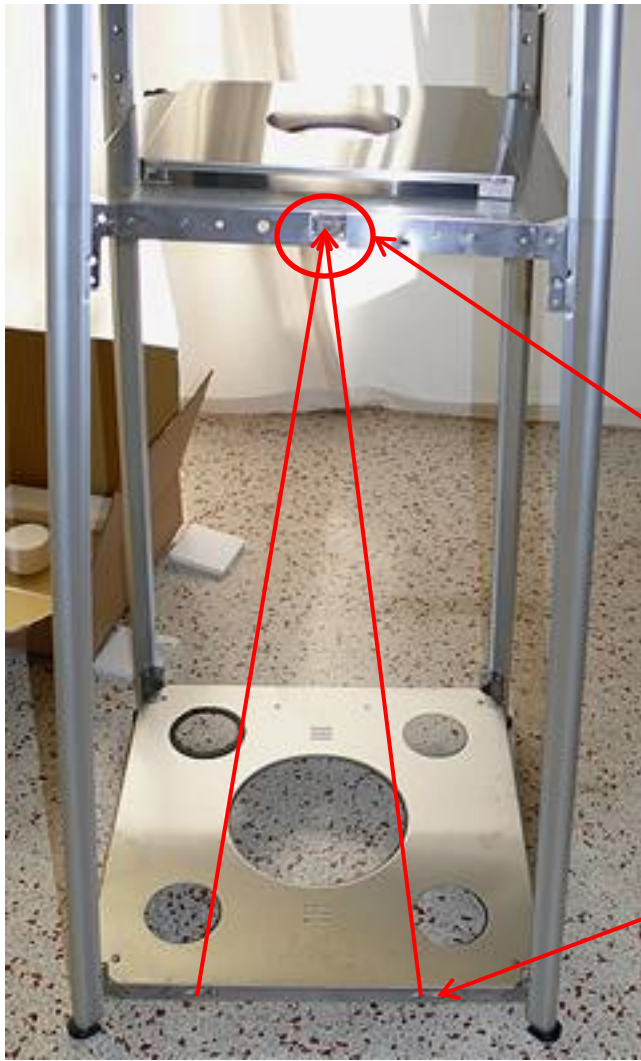
### 3. Get the middle platform ready

- ❑ Unpack the middle platform from the second largest square box.
- ❑ Be careful as the burner is mounted to the middle platform.
- ❑ Unscrew the 3 screws and remove the burner from the middle platform.
- ❑ Put the burner and the 3 screws aside, you will need these in a later assembly step.



## 4. Mount the middle platform 1 of 2

- ❑ Make sure that the front of the middle platform is lined up with the base side where the openings are (red).
- ❑ Prepare 2 screws to be ready so you can fix diagonally across one side of the platform each (blue).





#### 4. Mount the middle platform 2 of 2

- ❑ Once you have fixed to sides (opposite diagonal recommended), attach the middle platform on each side with 2 screws.
- ❑ Now the unit is fairly stable and can be moved around holding on the lower side/leg poles.





## 5. Mount the "crown" top frame

- ❑ Unpack the top frame from one of the smaller carton boxes.
- ❑ Easiest way to initially mount is to have two screws available and fix the crown top frame at two sides first.
- ❑ Then attach it with all 8 screws required.



## 6. Attach the wheels (optional)

- ❑ Unpack the wheels from the rectangle box.
- ❑ **Important:** the screws for the wheels are the only different type of screws from all others!
- ❑ Fit the wheels in and attach using washer and fixer to the screws.





## 7. Attach the side panels

- ❑ Unpack the 3 side/back panels from the plastic wrap.
- ❑ Side / back panels have venting openings.
- ❑ Fix first two diagonally opposite sides, then drill in the other 2 screws first and finish up all four screws (red circle and 1-4 steps).
- ❑ Make sure the front of the unit remains open.

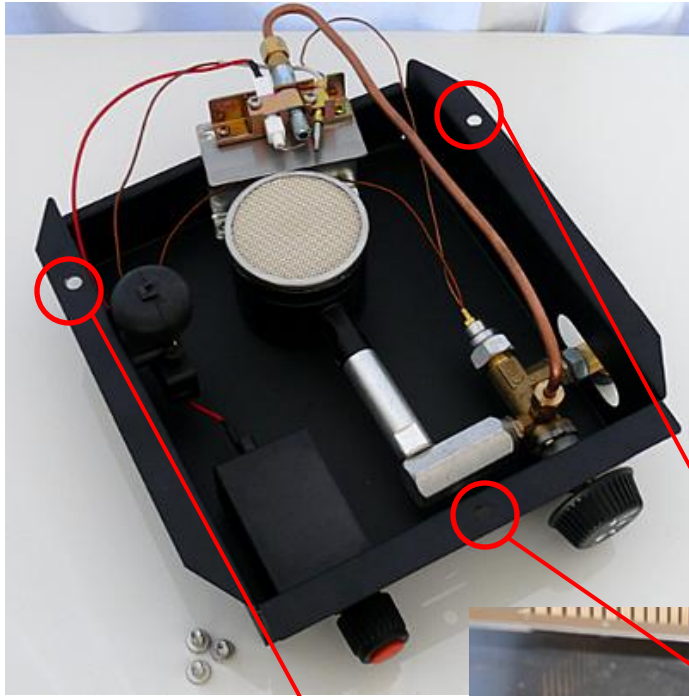




## 8. Attach the side wire grills

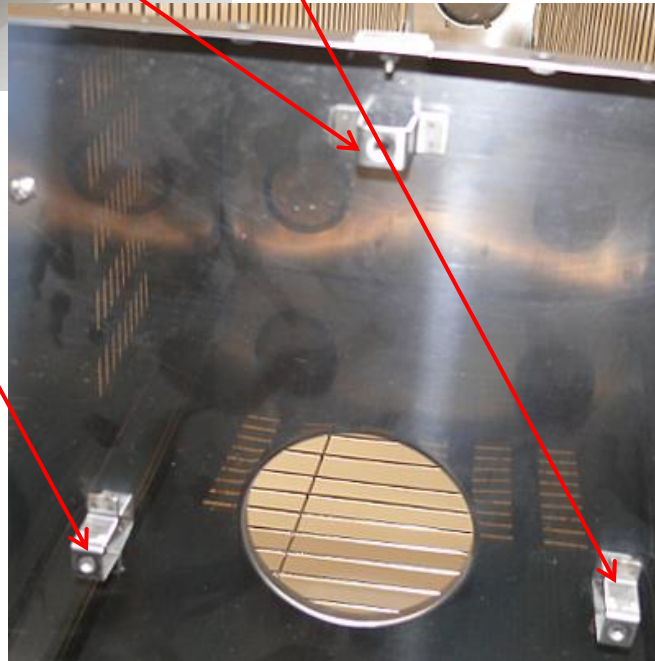
- ❑ Unpack the wire grills.
- ❑ Locate the wire-connectors.
- ❑ Connect the larger lower wire grill to the smaller upper wire grill – recognize that the horizontal wires. attach on the backside to the vertical ones (red circle).
- ❑ Press entire wire grill onto the side panels and make sure all 8 hooks hold the wire grill.
- ❑ Lock the wire grill panel at the top “crown” frame.
- ❑ **Leave one side open** to allow mounting of the glass tube!





## 9. Mount the burner

- ❑ Attach the burner to the middle platform using the 3 screws set aside when unpacking the middle platform (step 4)
- ❑ Make sure to mount the burner at two points first and have the 3<sup>rd</sup> screw also available to avoid bending of the frame while properly attaching it.





## 10. Mount the glass tube

- ❑ Locate the black rubber ring in the box where the glass tube is packed.
- ❑ Prepare the rubber ring at the burner opening
- ❑ Unpack the glass tube from the carton.



### **BE CAUTIOUS!**

- ❑ **Locate the Made in Japan** side of the glass tube. This is the lower end that fits to the burner side (red circle).
- ❑ Slide the glass tube tilted inside the Bonfire and make sure to first fit it at the upper end ("crown") and then slide it inside and fit it in the black rubber ring at the burner side.
- ❑ Once the glass tube is in, you can close up the unit by attaching the fourth wire grill (step 8).





## 11. Add the front panel

- ❑ Attach the black button to the front panel.
- ❑ At the lower bottom end of the front panel are the two hooks that perfectly fit into the openings of the floor base.
- ❑ The magnet at the front of the burner platform will hold the front panel once shut.
- ❑ Use the wire cord to secure the front panel to avoid it falling when opened.





## 12. Mount the reflector hood

- ❑ The "crown" top has 3 fixing points for the reflector hood.
- ❑ Lay the reflector flat on the crown top and screw it on down from the reflector outside (see red arrow down).





## 13. Propane unit: install the regulator

- ❑ Take off the protection cap at the burner hose.
- ❑ Attach the regulator hose to the burner. Make sure to use plumbing tape (teflon) to secure airtight connection of the hose to the burner.
- ❑ Mount the black straps in the gas tank compartment through the 3 openings per side.





## 14. Test your unit

- ❑ First of all make sure the burner is equipped with an AA battery.
- ❑ Test the pilot spark by pushing the red ignition button. If there is no sparks, check your battery. **HINT:** Batteries with a thick wrapping at the plus pole may not contact properly, therefore replace by different brand/type in case of issues (see blue circle).



Then make sure the gas connection is properly installed and the unit is connected.



- ❑ Open the gas valve so the unit will receive gas.
- ❑ Set the burner regulation button to position start indicated by the lightning sign. **Push and hold the button for 20-30 seconds.**
- ❑ Now push the red ignition button that will start the sparks at the pilot. Once the pilot shows a flame, hold the burner regulation button for another few seconds until the pilot flame shows clearly blue (blue arrow).
- ❑ Let go the burner regulation button and adjust now to the flame size desired.



**ENJOY The Bonfire!**

